



V3753-62

Carena 3-Light Indoor Nickel Bath or Vanity Wall Mount with Etched White Cased Glass Cylinder Shades

Catalog #:

Type:

Project:

Prepared By:

Because Lighting Speaks Volumes

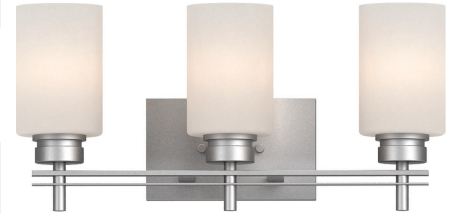
Description

Indulge in this indoor bath or vanity wall mount's contemporary design. Heavy and thin lines are balanced for a clean, crisp feel. Straight, striking rods, bars, and thin metal lines are paired or crossed to provide brilliant contrast. Encased in elegant rounded cylindrical etched white cased glass shades. Individually handspun by master glassblowers, glass is crafted layer by layer into a flawless multi-layered cylinder with a delightfully smooth touch. Enjoy phenomenal long-lasting color that will never fade from cleaning or sunlight. Glass color is always non-painted and 100% natural, inherent to the original sand pigment from which it was created. Illumination mechanism is sure to impress with its stunning, unique radiance. Light diffuses within multiple layers instead of simply filtering light through. The entire glass glows bright in perfect uniformity, emitting an ethereal, serene ambience and capturing an immaculate glow throughout the glass. This versatile light can conveniently mount up or down. Install upwards for an uplight configuration or downwards for a downlight configuration. Suitable for both damp or dry locations. Feel at ease with nickel's lasting quality and stunning appearance. High-quality nickel provides phenomenal durability and an attractive gleam. Hard surface provides top quality protection against scratches. Easy maintenance—simply clean and polish to achieve an even more lustrous shine. Outer lacquer finish provides an attractive sheen and additional layer of protection. Complements stainless-steel appliances, bathrooms, vanity, living rooms, hallways, restaurants, and many other indoor areas. Delight in this exquisite piece's sleek, angular look.

Specifications

Collection	Carena
Style	Contemporary
Type of Lighting	Indoor Wall Lighting
Product Type	Wall Mount
Height (in.)	9.75
Width (in.)	20
Length or Extension/Projection (in.)	6.5
Finish	Nickel
Main Material	Steel
Other Material	Etched White Cased Glass Cylinder Shades
Shade Model #	GS-791
Shade Height (in.)	6
Shade Width (in.)	4

Shade Length or Projection/Extension (in.)	4
Shade Direction	Depends on Fixture Installation (Fixture Can Mount Upward or Downward)
Light Direction	Depends on Fixture Installation (Fixture Can Mount Upward or Downward)
Installation/Mounting Position	Upward or Downward
Sloped Ceiling Swivel Included?	No
Mounting Deck Height (in.)	4.625
Mounting Deck Width (in.)	7.875
Mounting Deck Shape	Rectangle
Installation Location	Damp
Light #	3
Watts per Light (W)	100
Total Wattage (W)	300
Light Bulb(s) Included?	No
Dimmable?	Yes
Base	Medium Base (E26)
Voltage (Volts)	120V
Safety Ratings	UL Listed
Assembly	Assembly Required



At a Glance

- Sturdy, Exquisite Construction
- Perfect Complement to Stainless-Steel Appliances, Bathroom, Vanity, Living Room, Hallway, Restaurants, and Many Other Indoor Areas
- High-Quality, Stunning Nickel—Extreme Durability and Top Quality Protection Against Scratches
- Outer Lacquer Finish Provides Attractive Sheen and Additional Protection Layer
- Open/Uncovered Top/Bottom of Shade Provides Convenient Access for Quick and Easy Light Bulb Replacement and Helps Prevent Dust Accumulation
- Standard Medium Base (E26) Compatible with Incandescent, Halogen, Self-Ballast-Fluorescent, and LED Light Bulbs
- Compatible with All Dimmers
- Conveniently Suitable for Both Damp or Dry Locations
- Conveniently Installs as an Uplight or Downlight—Mounts Up and Down
- Heat-Resistant Components Safely Withstand Up to 100 Watts
- 3-Light Fixture (Bulbs Not Included)
- Individually Inspected for Quality Assurance
- UL Listed for Safety